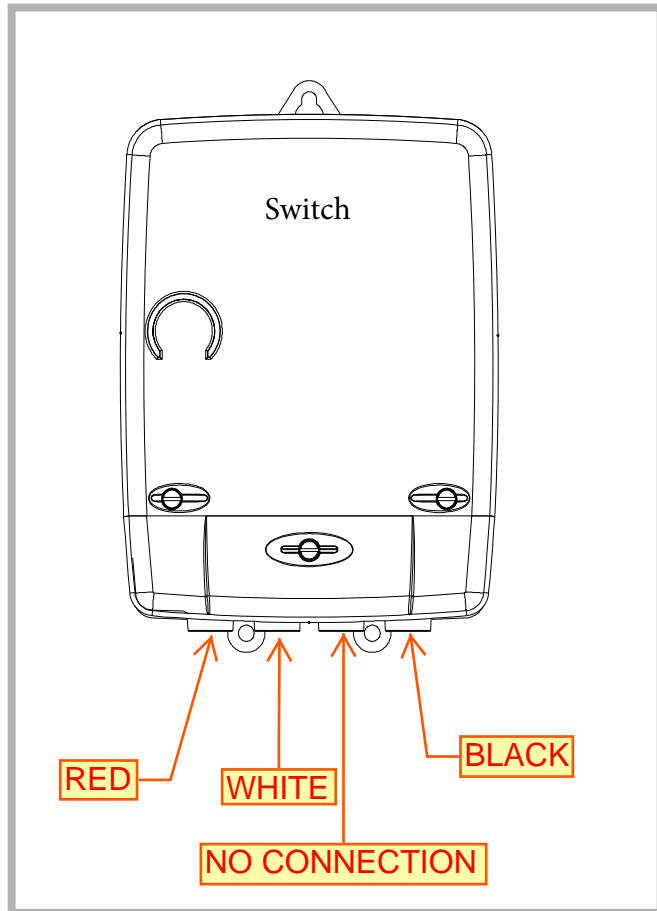


Load Management Installation Sheet

Noble REMC Load Management Switch Installation Requirements

When installed at the center of a pivot system, the switch must be installed as high as possible on the stationary structure.

All wiring shall be 12AWG THWN



Wire Color Code:

Red wire shall be 120v continuous supply
White wire shall be connected to neutral
Black wire shall be switched leg from device
to interrupt operation of well motor

Description of Operation:

When the load management switch is closed the system shall operate normally

The 120v control circuit will be broken by the load management device shutting off the well motor.

Additional relays to properly operate the device will be the responsibility of the contractor to furnish and install.

The system shall be tested prior to acceptance by Noble REMC employees with the contractor present. Call 1-800-933-7362 to schedule an appointment for testing.