



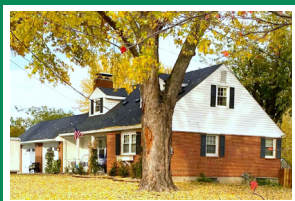
# CALL YOUR CO-OP FIRST

When you start making that to-do list  
for your next big project,  
make your first call to Noble REMC.

Before you choose a contractor,  
before you sign on the dotted line,  
before you upgrade your HVAC.

Our energy advisor is eager and available  
to discuss energy efficient options,  
including air source heat pumps,  
that are best for your home and lifestyle.

Visit [nobleremc.com](http://nobleremc.com) or call our office at  
800-933-7362 for more information!



## Noble REMC

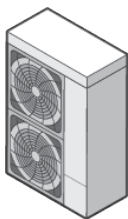
A Touchstone Energy® Cooperative



# WHY CHOOSE AN AIR SOURCE HEAT PUMP?

## Cut heating costs compared to conventional heating systems.

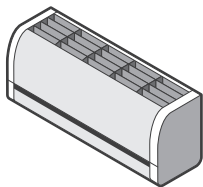
An ASHP can provide heating for approximately one-third the cost of traditional electric baseboard heating and has more price stability than propane. An ASHP is so efficient it can deliver up to three times more heat energy to a home than the electrical energy it consumes. This is possible because a heat pump moves heat rather than converting it from fuel, as combustion heating systems do.



---

## Reduced cooling costs compared to conventional room air conditioners.

During the summer months, a central ASHP automatically becomes a central air conditioner, and you will have reduced cooling bills due to its highly efficient operation.



## Easy installation.

A central ASHP uses existing ductwork in your home to deliver heating and cooling. In most climate zones, an ASHP can be installed as a drop-in replacement when either a central air conditioner or a furnace needs replaced. If you don't have ductwork, a ductless heat pump is a great option.

---

## And one of the best parts?

The cash back rebates available through our Power Moves energy efficiency program!  
Give us a call at 800-933-7362.